


# Top Lodge

Oxen Close, Broughton,  
Skipton, Yorkshire,  
BD23 3AH

 *What 3 Words*  
differ.balanced.altitude



## PROPERTY HIGHLIGHTS

### Stylish Interiors

Retro-modern design inspired by Pugin, blending charm and sophistication.

### Spacious Living

Located within the grounds of Broughton Hall, the property features ample indoor and outdoor private access space.

### Bedrooms

Three versatile bedrooms (double or twin), one on the ground floor with ensuite bathroom.

### Weekday Breakfast

Guests can enjoy a breakfast on weekdays at Utopia, our bistro on the main grounds of Broughton Sanctuary.

### Bathrooms

Two bathrooms on the first floor, each with a shower and rolltop bath tubs.

### Lockable Bicycle Storage

Secure storage space for bicycles, ideal for cycling enthusiasts.

### Garden Area

Enjoy the pleasant garden overlooking peaceful woodlands.

## A NATURAL PLAYGROUND

### Nature Recovery Programme

Explore over 3,000 acres of woodland, moors, and wildflower meadows.

### Unique Experiences

Try wild swimming, forest bathing, or join our fire temple hangouts for unforgettable adventures.

### Wellbeing Activities

Participate in our monthly schedule of classes, signature therapies such as the Soma Dome Meditation or Float Tank, and Somatic Flow Yoga with a visit to Avalon, our state-of-the-art wellbeing centre.

### Avalon Pool Suite

Access, which includes use of the Pool, Sauna, Steam Room, Hydro Pool, PT Studio, and towels in Avalon, is every day of week (subject to availability) from 10am - 12pm\*.

- Pricing per sessions:
  - £20 (adults)
  - £10 (children between 4 to 16 years of age).

*\*Should this time not be convenient during your stay then please contact Avalon the week of your arrival to check availability for another 2-hour session period. Any Pool Suite session outside the 10am – 12pm slot is £30 per adult / £15 per child).*

## NEARBY ATTRACTIONS

**Skipton** - Just 3 miles away, this bustling market town is famous for its winding canals, the splendid Skipton Castle, independent shops, and excellent rail links.

**Saltaire** - A UNESCO World Heritage Site renowned for its historic architecture and cultural significance. Visit the permanent David Hockney exhibition in Salts Mill.

**Malham Cove** - A stunning limestone formation offering spectacular views and great hiking opportunities taking in waterfalls and famous scenes from the Harry Potter Films.

**Grassington** - A charming village known for its picturesque streets, local shops, and vibrant community events. It is also the setting for the most recent TV adaptation of All Creatures Great and Small.

### Plan Your Activities

*Immerse yourself in the natural beauty and serene environment of the Yorkshire Dales while enjoying the curated amenities of this modern barn conversion. Book your stay today for a memorable getaway.*



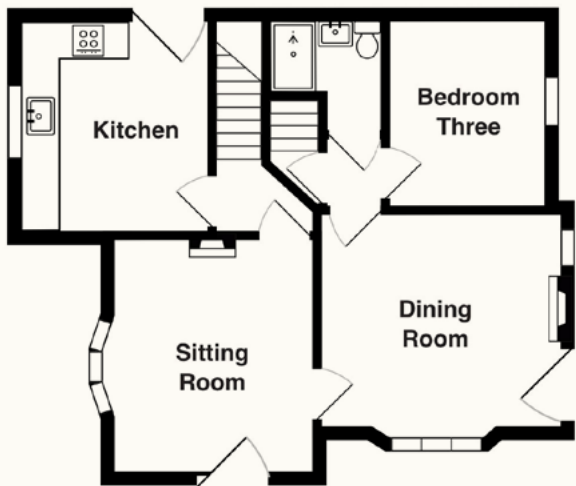
 01756 799 608

 [welcome@broughtonsanctuary.co.uk](mailto:welcome@broughtonsanctuary.co.uk)

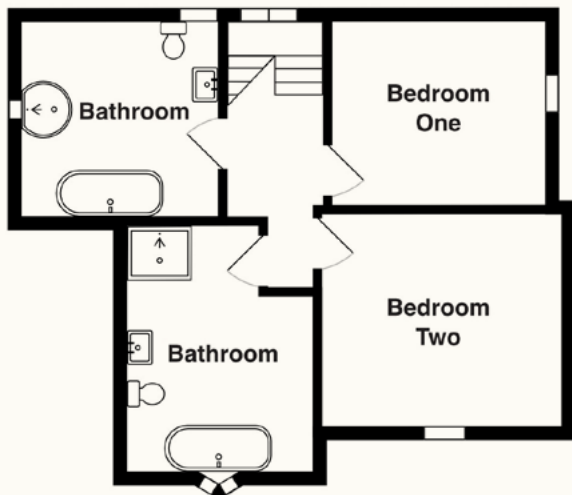
 [broughtonsanctuary.co.uk](https://broughtonsanctuary.co.uk)

TOP LODGE FLOORPLANS

GROUND FLOOR



FIRST FLOOR



LOWER GROUND FLOOR

